

**COMPOSITE REGIONAL CENTRE FOR SKILL DEVELOPMENT, REHABILITATION & EMPOWERMENT
OF PERSONS WITH DISABILITIES [CRC – KOZHIKODE]**

(Under the administrative control of NIEPMD, Chennai)

Department of Empowerment of Persons with Disabilities (Divyangjan)

Ministry of Social Justice & Empowerment, Government of India

IMHANS Campus, Medical College PO Kozhikode Kerala 673008

Department of Speech & Hearing CRC Kozhikode

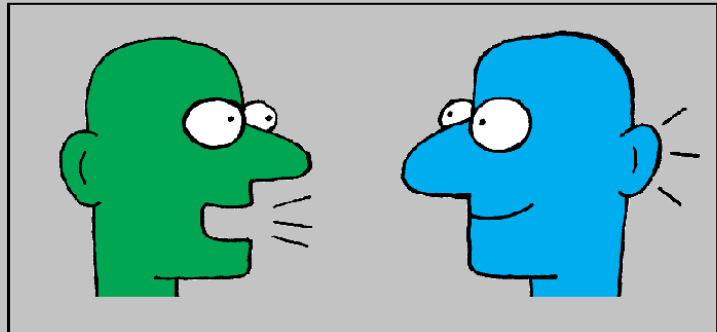
**HOW TO FACILITATE COMMUNICATION
WITH HEARING IMPAIRED PEOPLE**



- CHECK GOOD LIGHT SHOULD BE IN THE COMMUNICATION SITUATION.



- FACE THE HEARING IMPAIRED PERSON DIRECTLY, ON THE SAME LEVEL.

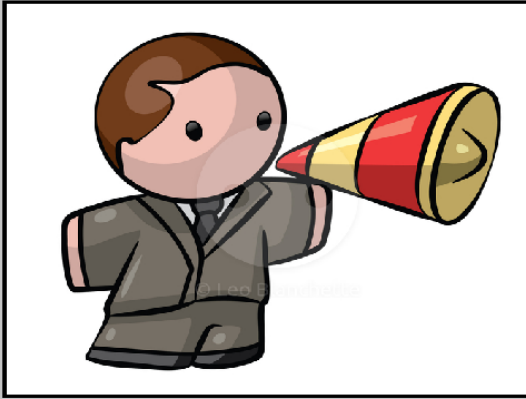


- ALWAYS SPEAK CLEARLY, SLOWLY
- DO NOT MAKE COMMUNICATION FROM ANOTHER ROOM
- TALK NATURALLY WITHOUT SHOUTING OR EXAGGERATION MOUTH MOVEMENT

- GIVE TIME TO FOLLOW COMMUNICATION
- USE SIMPLE SENTENCE GIVE PAUSE BETWEEN SENTENCES
- GIVE CHANCE TO FOCUS ATTENTION TOWARDS COMMUNICATION FROM THE BEGINNING



- INFORM ABOUT THE TOPIC
- TAKE THE PERSON NAME BEFORE COMMUNICATION
- SUPPORT FOR LIP READING KEEP YOUR HANDS AWAY FROM YOUR FACE WHICH COMMUNICATION



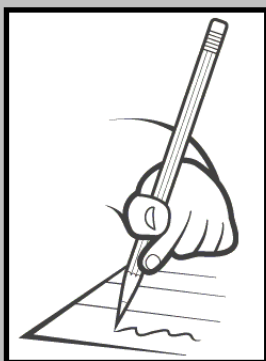
- POSITION YOURSELF TOWARDS BETTER EAR SIDE OF HEARING IMPAIRED
- COMMUNICATE IN LESS NOISY SITUATION
- IF HEARING IMPAIRED FINDS DIFFICULTIES TO FOLLOW PARTICULAR PHRASE OR WORD TRY DIFFERENT WAY OF SAYING RATHER THAN REPEATING THE SAME WORDS.



- IF POSSIBLE WITH NUMBER, DAYS, AND ANY PARTICULAR INFORMATION FACILITATE WITH WRITTEN FORM ALSO
- AVOID SUDDEN CHANGE IN TOPIC, IF CHANGED PLEASE INFORM IT TO HEARING IMPAIRED PERSON
- PROVIDE OTHER VISUAL CUES SUCH AS FACIAL EXPRESSION HAND MOVEMENT

HEARING AIDS IS IMPORTANT

- CHECK THE HEARING AIDS IS WORKING
- CHECK THE BATTERIES IN THE HEARING AIDS
- CHECK THE EAR MOULD PLACEMENT



PREPARED BY :

MR. SHIVRAJ L BHIMTE

ASSISTANT PROFESSOR SPEECH & HEARING

CRC KOZHIKODE